

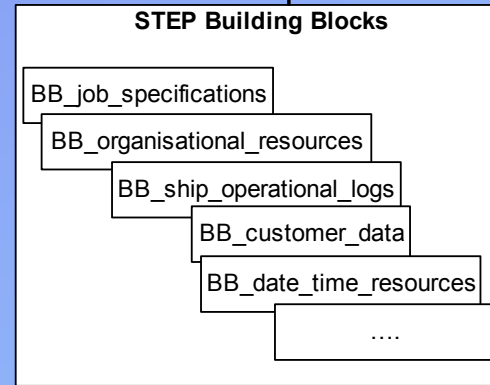
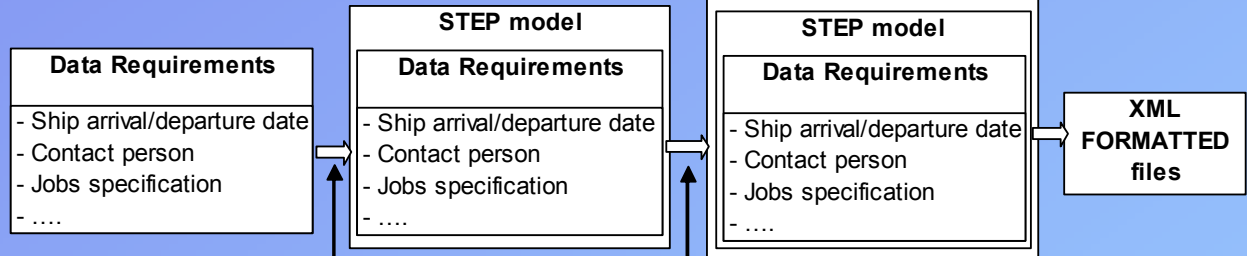
Production Systems Planning, Control & Networking

E-business and E-work Applications

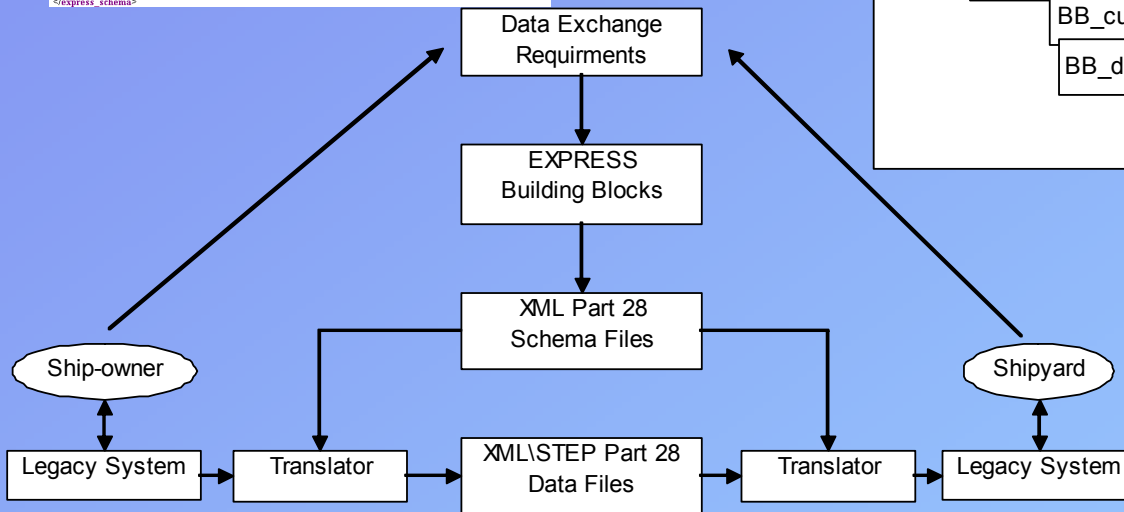
Information modeling for the electronic operation in maritime case supply chain

```

<express: schema>
  - <embedded: remark>
    The entities declared in this schema can be used to describe the initial information flow between a shipyard and a shipowner.
  </embedded: remark>
  <schema_id>Enquirer_data_model</schema_id>
  - <interface: specification_block>
    - <use: from>
      <schema_ref>Enquirer_data_import</schema_ref>
    </use: from>
    </interface: specification_block>
  - <type: decl>
    <type_id>Main_machinery_type</type_id>
    - <underlying: type>
      - <enumeration>
        <enumeration_id>DIESEL_ENGINE</enumeration_id>
        <enumeration_id>FAST_SPEED</enumeration_id>
        <enumeration_id>ELECTRICAL</enumeration_id>
        <enumeration_id>OTHER</enumeration_id>
      </enumeration>
    </underlying: type>
  </type: decl>
  - <entity: decl>
    - <embedded: remark>
      This entry describes the request of a potential customer for equipment or services or both.
    </embedded: remark>
    <entity_id>Enquiry</entity_id>
    + <sub: type_of>is_a_type_of</sub: type_of>
    - <explicit: attr_block>
      - <explicit: attr>
        - <embedded: remark>
          The date that the ship owner desires the ship to be in the shipyard.
        </embedded: remark>
        <attribute_id>Ship_arrival_date</attribute_id>
        + <base: type></base: type>
      </explicit: attr>
    </explicit: attr_block>
    + <explicit: attr_block>
      - <explicit: attr>
        + <embedded: remark></embedded: remark>
        <attribute_id>Terms_and_conditions_of_the_repair</attribute_id>
        + <base: type></base: type>
      </explicit: attr>
    </explicit: attr_block>
  </entity: decl>
</express: schema>
  
```

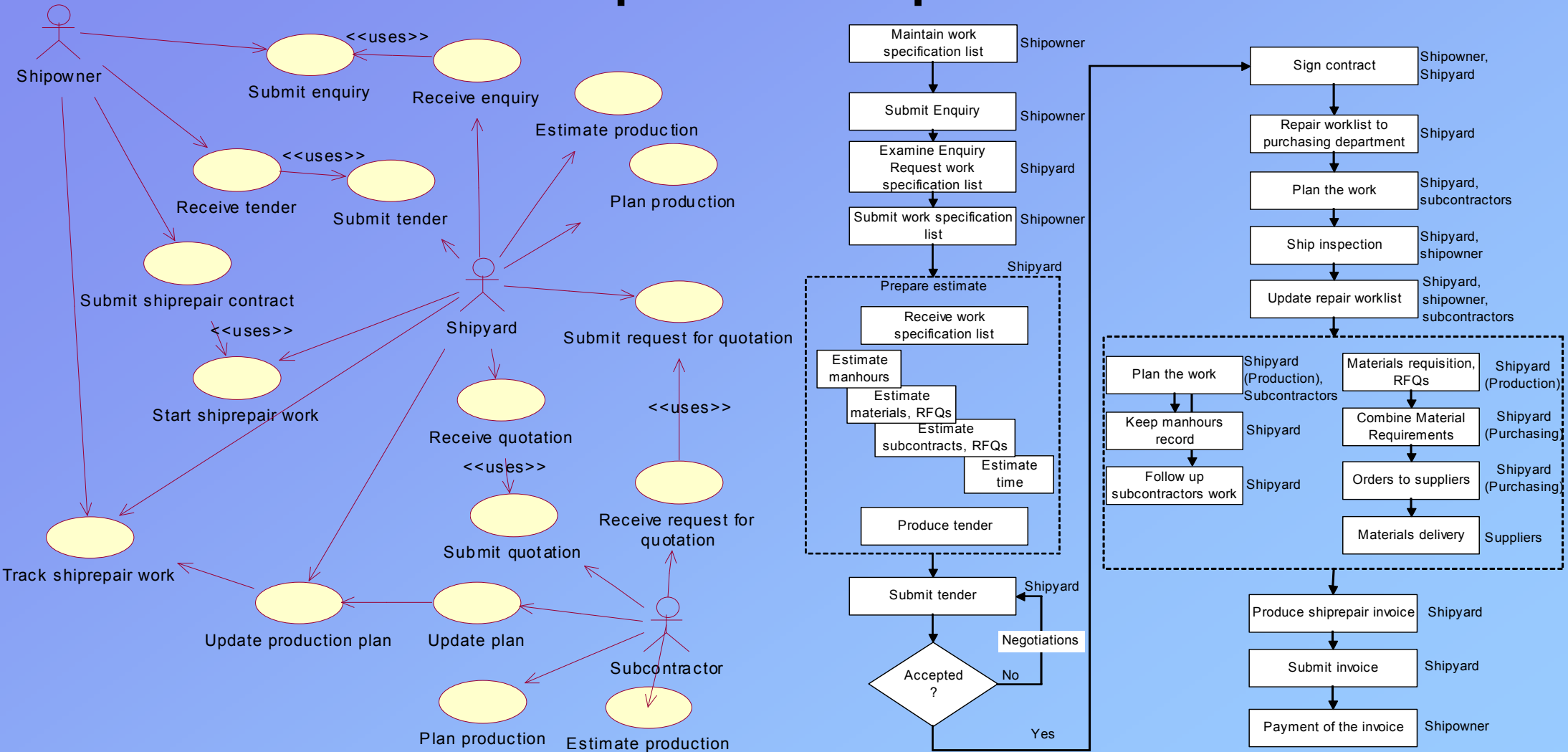


EXPRESS model	XML part 28 mapping
SCHEMA persons;	<schema_decl>
ENTITY person;	<schema_id>
name: STRING;	persons
END ENTITY;	</schema_id>
END_SCHEMA;	<entity_decl>
	person
	</entity_id>
	<explicit_attr_block>
	<explicit_attr>
	<attribute_id>
	name
	</attribute_id>
	<base_type>
	</base_type>
	<explicit_attr>
	</explicit_attr_block>
	</entity_decl>
	</schema_decl>



Production Systems Planning, Control & Networking

E-business and E-work Applications Functional decomposition of cooperation in maritime



Makris, S., D. Mourtzis, N. Papakostas, G. Chryssolouris and I. Gaviotis, "An e-Collaboration Software Framework for the Ship Repair Supply Chain", Proceedings of the 12th International Conference on Computer Applications in Shipbuilding-ICCAS, Busan, -Korea, (August 2005) pp. 717-727.

Production Systems Planning, Control & Networking

E-business and E-work Applications Internet based Collaboration

ISS-C Welcome Nikolaos Ioannidis 12 / 11 / 2004 20 : 52 : 42

Home | User Administration | Status | Interfaces | Messages | View ISS Manual | Log

Outgoing Tender

Submit Save Create RFO Send Message View Related Messages

View Tender Versions

Ship Owner Name:

Shipowner Representative:

Shipyard Representative:

Reference Number:

Tender Name: [View Remarks](#) | [Payment Terms](#)

Status:

Ship Name:

Related To Enquiry:

[More Details...](#)

Item Details:
[Add Item from Archive](#)
[Add Standard Item](#)
[Add New Item](#)

Item Name	Item Type	Tender Item Description	Unit	Quantity	Unit Price	Category
IS1	SERVICE	Remove old anodes from sea chests and install new...	FIXED	1	5000	PLATING
IS2	SERVICE	Anodes to be protected with grease.	FIXED	1	4000	YARD SERVICE
IS3	SERVICE	Allow for the cropping out and renewal of a secti...	FIXED	1	6000	PIPING
IS4	SERVICE	Allow for the fabrication and fitting of a sectio...	FIXED	1	7000	PIPING
IS5	SERVICE	Take and record rudder clearness	FIXED	1	3200	FITTING/MACH
IS6	SERVICE	Remove and reinstall blade access doors. Quality ...	FIXED	1	3500	FITTING/MACH

ISS-C Welcome Iakovos Athanasiou 12 / 11 / 2004 13 : 36 : 12

Home | User Administration | Status | Interfaces | Messages | View ISS Manual | Logout ISS-C

Incoming Tender

Decline Accept Send Message View Related Messages Export Tender Save as Excel

Sender Name:

Shipowner Representative:

Shipyard Representative:

Tender Name: [View Remarks](#) | [Payment Terms](#)

Status:

Ship Name:

Related To Enquiry:

[Less Details...](#)

Notes: Dear Mr. Athanasiou,
We wish to thank you for your enquiry dated 18 October 2004. We now have the pleasure in submitting our Tender for the repair of the IONIAN SPIRIT vessel.
Thank you

Dry Docking Days:

Total Repair Days:

Ship Arrival Date: From: -- To: --

Ship Docking Date: --

Ship Undocking Date: --

Tender Valid Until: --

Cost:

Tax:

Total Price:

Currency: €

Linked Files:

Filename	Delete
<input type="text"/>	<input type="text"/>

[Browse...](#) [Attach File](#)

Item Details: [Revise Item\(s\)](#)

Item Name	Item Type	Tender Item Description	Quantity	Unit	Unit Price	Category	Status	Revi
IS1	SERVICE	Remove old anodes from sea chests and install new...	1	FIXED	5000	PLATING	PENDING	<input type="checkbox"/>
IS2	SERVICE	Anodes to be protected with grease.	1	FIXED	4000	YARD SERVICE	PENDING	<input type="checkbox"/>
IS3	SERVICE	Allow for the cropping out and renewal of a secti...	1	FIXED	6000	PIPING	PENDING	<input type="checkbox"/>
IS4	SERVICE	Allow for the fabrication and fitting of a sectio...	1	FIXED	7000	PIPING	PENDING	<input type="checkbox"/>

TOP

Production Systems Planning, Control & Networking

E-business and E-work Applications Standards Based Data Modeling

